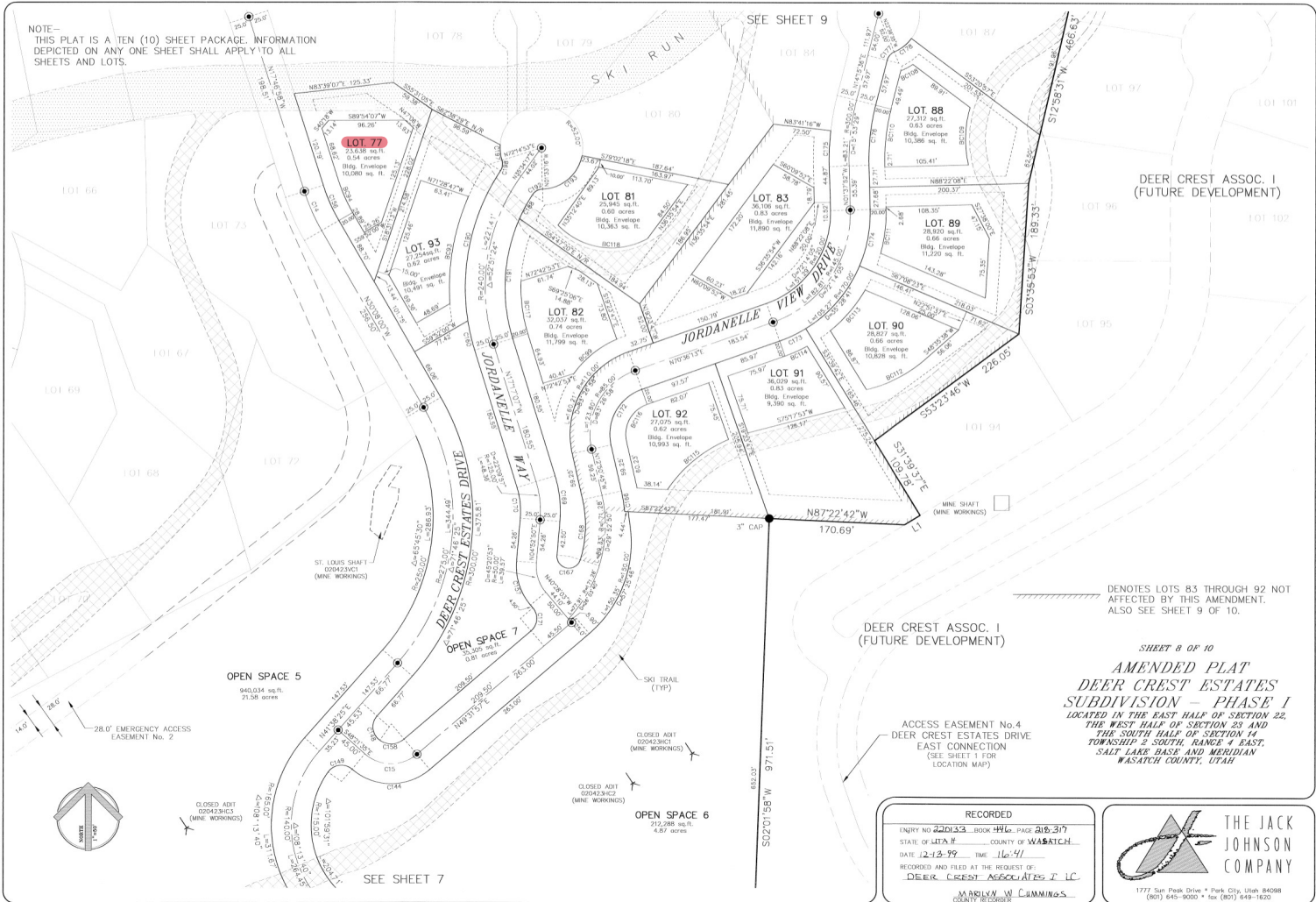


NOTE - THIS PLAT IS A TEN (10) SHEET PACKAGE. INFORMATION DEPICTED ON ANY ONE SHEET SHALL APPLY TO ALL SHEETS AND LOTS.



DEER CREST ASSOC. I (FUTURE DEVELOPMENT)

--- DENOTES LOTS 83 THROUGH 92 NOT AFFECTED BY THIS AMENDMENT. ALSO SEE SHEET 9 OF 10.

DEER CREST ASSOC. I (FUTURE DEVELOPMENT)

SHEET 8 OF 10
AMENDED PLAT
DEER CREST ESTATES
SUBDIVISION - PHASE I
 LOCATED IN THE EAST HALF OF SECTION 22,
 THE WEST HALF OF SECTION 23 AND
 THE SOUTH HALF OF SECTION 14,
 TOWNSHIP 2 SOUTH, RANGE 1 EAST,
 SALT LAKE BASE AND MERIDIAN
 WASHINGTON COUNTY, UTAH

ACCESS EASEMENT No. 4
 DEER CREST ESTATES DRIVE
 EAST CONNECTION
 (SEE SHEET 1 FOR
 LOCATION MAP)

RECORDED	
ENTRY NO.	202133
BOOK	446, PAGE 216, 317
STATE OF UTAH	COUNTY OF WASHINGTON
DATE	12-13-99 TIME 10:41
RECORDED AND FILED AT THE REQUEST OF:	
DEER CREST ASSOCIATES, L.L.C.	
MARILYN W. CUMMINGS COUNTY RECORDER	

THE JACK JOHNSON COMPANY

1777 Sun Peak Drive • Park City, Utah 84308
 (801) 845-9000 • Fax (801) 849-1820

--- SEE SHEET 1 HEREIN SHEET 8 OF 10 ---
 SHEET 8 OF 10, 25, 26, 27, 28, 29, 30, 31, 32, 33, 34, 35, 36, 37, 38, 39, 40, 41, 42, 43, 44, 45, 46, 47, 48, 49, 50, 51, 52, 53, 54, 55, 56, 57, 58, 59, 60, 61, 62, 63, 64, 65, 66, 67, 68, 69, 70, 71, 72, 73, 74, 75, 76, 77, 78, 79, 80, 81, 82, 83, 84, 85, 86, 87, 88, 89, 90, 91, 92

1:314, 1:315, 1:316, 1:317, 1:318, 1:319, 1:320, 1:321, 1:322, 1:323, 1:324, 1:325, 1:326, 1:327, 1:328, 1:329, 1:330, 1:331, 1:332, 1:333, 1:334, 1:335, 1:336, 1:337, 1:338, 1:339, 1:340, 1:341, 1:342, 1:343, 1:344, 1:345, 1:346, 1:347, 1:348, 1:349, 1:350, 1:351, 1:352, 1:353, 1:354, 1:355, 1:356, 1:357, 1:358, 1:359, 1:360, 1:361, 1:362, 1:363, 1:364, 1:365, 1:366, 1:367, 1:368, 1:369, 1:370, 1:371, 1:372, 1:373, 1:374, 1:375, 1:376, 1:377, 1:378, 1:379, 1:380, 1:381, 1:382, 1:383, 1:384, 1:385, 1:386, 1:387, 1:388, 1:389, 1:390, 1:391, 1:392, 1:393, 1:394, 1:395, 1:396, 1:397, 1:398, 1:399, 1:400, 1:401, 1:402, 1:403, 1:404, 1:405, 1:406, 1:407, 1:408, 1:409, 1:410, 1:411, 1:412, 1:413, 1:414, 1:415, 1:416, 1:417, 1:418, 1:419, 1:420, 1:421, 1:422, 1:423, 1:424, 1:425, 1:426, 1:427, 1:428, 1:429, 1:430, 1:431, 1:432, 1:433, 1:434, 1:435, 1:436, 1:437, 1:438, 1:439, 1:440, 1:441, 1:442, 1:443, 1:444, 1:445, 1:446, 1:447, 1:448, 1:449, 1:450, 1:451, 1:452, 1:453, 1:454, 1:455, 1:456, 1:457, 1:458, 1:459, 1:460, 1:461, 1:462, 1:463, 1:464, 1:465, 1:466, 1:467, 1:468, 1:469, 1:470, 1:471, 1:472, 1:473, 1:474, 1:475, 1:476, 1:477, 1:478, 1:479, 1:480, 1:481, 1:482, 1:483, 1:484, 1:485, 1:486, 1:487, 1:488, 1:489, 1:490, 1:491, 1:492, 1:493, 1:494, 1:495, 1:496, 1:497, 1:498, 1:499, 1:500, 1:501, 1:502, 1:503, 1:504, 1:505, 1:506, 1:507, 1:508, 1:509, 1:510, 1:511, 1:512, 1:513, 1:514, 1:515, 1:516, 1:517, 1:518, 1:519, 1:520, 1:521, 1:522, 1:523, 1:524, 1:525, 1:526, 1:527, 1:528, 1:529, 1:530, 1:531, 1:532, 1:533, 1:534, 1:535, 1:536, 1:537, 1:538, 1:539, 1:540, 1:541, 1:542, 1:543, 1:544, 1:545, 1:546, 1:547, 1:548, 1:549, 1:550, 1:551, 1:552, 1:553, 1:554, 1:555, 1:556, 1:557, 1:558, 1:559, 1:560, 1:561, 1:562, 1:563, 1:564, 1:565, 1:566, 1:567, 1:568, 1:569, 1:570, 1:571, 1:572, 1:573, 1:574, 1:575, 1:576, 1:577, 1:578, 1:579, 1:580, 1:581, 1:582, 1:583, 1:584, 1:585, 1:586, 1:587, 1:588, 1:589, 1:590, 1:591, 1:592, 1:593, 1:594, 1:595, 1:596, 1:597, 1:598, 1:599, 1:600, 1:601, 1:602, 1:603, 1:604, 1:605, 1:606, 1:607, 1:608, 1:609, 1:610, 1:611, 1:612, 1:613, 1:614, 1:615, 1:616, 1:617, 1:618, 1:619, 1:620, 1:621, 1:622, 1:623, 1:624, 1:625, 1:626, 1:627, 1:628, 1:629, 1:630, 1:631, 1:632, 1:633, 1:634, 1:635, 1:636, 1:637, 1:638, 1:639, 1:640, 1:641, 1:642, 1:643, 1:644, 1:645, 1:646, 1:647, 1:648, 1:649, 1:650, 1:651, 1:652, 1:653, 1:654, 1:655, 1:656, 1:657, 1:658, 1:659, 1:660, 1:661, 1:662, 1:663, 1:664, 1:665, 1:666, 1:667, 1:668, 1:669, 1:670, 1:671, 1:672, 1:673, 1:674, 1:675, 1:676, 1:677, 1:678, 1:679, 1:680, 1:681, 1:682, 1:683, 1:684, 1:685, 1:686, 1:687, 1:688, 1:689, 1:690, 1:691, 1:692, 1:693, 1:694, 1:695, 1:696, 1:697, 1:698, 1:699, 1:700, 1:701, 1:702, 1:703, 1:704, 1:705, 1:706, 1:707, 1:708, 1:709, 1:710, 1:711, 1:712, 1:713, 1:714, 1:715, 1:716, 1:717, 1:718, 1:719, 1:720, 1:721, 1:722, 1:723, 1:724, 1:725, 1:726, 1:727, 1:728, 1:729, 1:730, 1:731, 1:732, 1:733, 1:734, 1:735, 1:736, 1:737, 1:738, 1:739, 1:740, 1:741, 1:742, 1:743, 1:744, 1:745, 1:746, 1:747, 1:748, 1:749, 1:750, 1:751, 1:752, 1:753, 1:754, 1:755, 1:756, 1:757, 1:758, 1:759, 1:760, 1:761, 1:762, 1:763, 1:764, 1:765, 1:766, 1:767, 1:768, 1:769, 1:770, 1:771, 1:772, 1:773, 1:774, 1:775, 1:776, 1:777, 1:778, 1:779, 1:780, 1:781, 1:782, 1:783, 1:784, 1:785, 1:786, 1:787, 1:788, 1:789, 1:790, 1:791, 1:792, 1:793, 1:794, 1:795, 1:796, 1:797, 1:798, 1:799, 1:800, 1:801, 1:802, 1:803, 1:804, 1:805, 1:806, 1:807, 1:808, 1:809, 1:810, 1:811, 1:812, 1:813, 1:814, 1:815, 1:816, 1:817, 1:818, 1:819, 1:820, 1:821, 1:822, 1:823, 1:824, 1:825, 1:826, 1:827, 1:828, 1:829, 1:830, 1:831, 1:832, 1:833, 1:834, 1:835, 1:836, 1:837, 1:838, 1:839, 1:840, 1:841, 1:842, 1:843, 1:844, 1:845, 1:846, 1:847, 1:848, 1:849, 1:850, 1:851, 1:852, 1:853, 1:854, 1:855, 1:856, 1:857, 1:858, 1:859, 1:860, 1:861, 1:862, 1:863, 1:864, 1:865, 1:866, 1:867, 1:868, 1:869, 1:870, 1:871, 1:872, 1:873, 1:874, 1:875, 1:876, 1:877, 1:878, 1:879, 1:880, 1:881, 1:882, 1:883, 1:884, 1:885, 1:886, 1:887, 1:888, 1:889, 1:890, 1:891, 1:892, 1:893, 1:894, 1:895, 1:896, 1:897, 1:898, 1:899, 1:900, 1:901, 1:902, 1:903, 1:904, 1:905, 1:906, 1:907, 1:908, 1:909, 1:910, 1:911, 1:912, 1:913, 1:914, 1:915, 1:916, 1:917, 1:918, 1:919, 1:920, 1:921, 1:922, 1:923, 1:924, 1:925, 1:926, 1:927, 1:928, 1:929, 1:930, 1:931, 1:932, 1:933, 1:934, 1:935, 1:936, 1:937, 1:938, 1:939, 1:940, 1:941, 1:942, 1:943, 1:944, 1:945, 1:946, 1:947, 1:948, 1:949, 1:950, 1:951, 1:952, 1:953, 1:954, 1:955, 1:956, 1:957, 1:958, 1:959, 1:960, 1:961, 1:962, 1:963, 1:964, 1:965, 1:966, 1:967, 1:968, 1:969, 1:970, 1:971, 1:972, 1:973, 1:974, 1:975, 1:976, 1:977, 1:978, 1:979, 1:980, 1:981, 1:982, 1:983, 1:984, 1:985, 1:986, 1:987, 1:988, 1:989, 1:990, 1:991, 1:992, 1:993, 1:994, 1:995, 1:996, 1:997, 1:998, 1:999, 2:000